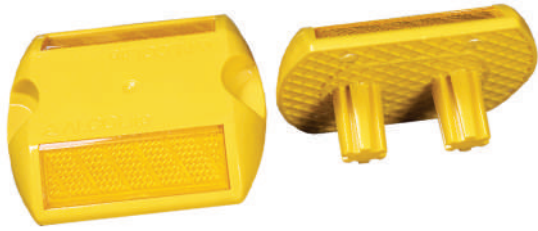


# REFLECTIVE PAVEMENT MARKER

MODEL NO. AL-280

 **ALCOLite**



- ✓ Excellent reflectivity
- ✓ High resistance and durability

We comply with the following standards:

- ASTM D-4280-04
- EN - 1463-1:2021
- MORTH-804

## PHYSICAL FEATURES (ASTM-D4280-04)

TEST	COMPLIANCE	PERFORMANCE	VALUE
FLEXURAL STRENGTH	✓	SUPERIOR	1817 KGF
COMPRESSIVE STRENGTH	✓	SUPERIOR	30,000 KGF
COLOUR	✓		OPTIMUM
TEMPERATURE CYCLE	✓		OPTIMUM
REFLECTIVE LENS RESISTANCE	✓		OPTIMUM
REFLECTIVITY	✓	SUPERIOR	
ABRASION RESISTANCE	✓	SUPERIOR	

## LUMINOUS INTENSITY COEFFICIENT (mcd/lx)0°:

REFLECTIVE LENS COLOUR	WHITE	YELLOW	RED
NORMS ASTM D4280-04	279	167	70
<b>ALCOLITE</b>	<b>1278</b>	<b>845</b>	<b>388</b>

PRODUCT CODE	AL 280	AL 280 TMDS
DIMENSION	100 X 90 X 18 MM	100 X 90 X 18 MM & Shank Size -20 X 27 mm (Approx)
WEIGHT	100 grams	140 grams
MATERIAL	ABS Polymer Material	ABS Polymer Material

\* RESULTS OF TESTS CARRIED OUT ON RANDOM SAMPLES ACCORDING TO THE STANDARD PROCEDURE IN OUR LABORATORY AND WITH INSTITUTIONS OF NATIONAL AND INTERNATIONAL PRESTIGE.

## PRESENTATION:

### PACKING WITH 100 PCS IN A BOX AL-280

- Box Size - (H) 209 mm x (W) 211 mm X (L) 510 mm
- Weight - 11.4 kg

### AL-280 TMDS

- Box Size - (H) 381 mm x (W) 216 mm X (L) 483 mm
- Weight - 14.84 kg

### BODY COLOUR:

White | Yellow | Customised

### REFLECTOR COLOUR:

Amber, White, Red, Green (As Per Specifications)



The following lens colours are Available: white, yellow, red, blue, green, and fluorescent orange. Markers are available as a one-way marker with one lens and one plug, a two-way marker with two lenses of the same colour, or a two-way marker with two different coloured lenses.

## ALCOLITE INDIA ROAD SAFETY PVT. LTD.

Registered Office : H-14, DSIDC Industrial Complex, Udyog Nagar, Rohtak Road, Nangloi, Delhi-110041

Factory Address : Plot No. E1-1129, RIICO Industrial Area, Bandapur, Alwar, Rajasthan - 301707



[www.alcolite.in](http://www.alcolite.in)



[customercare@alcolite.in](mailto:customercare@alcolite.in)



+91-8877005757

# REFLECTIVE PAVEMENT MARKER

MODEL NO. AL-280



ALCOLite

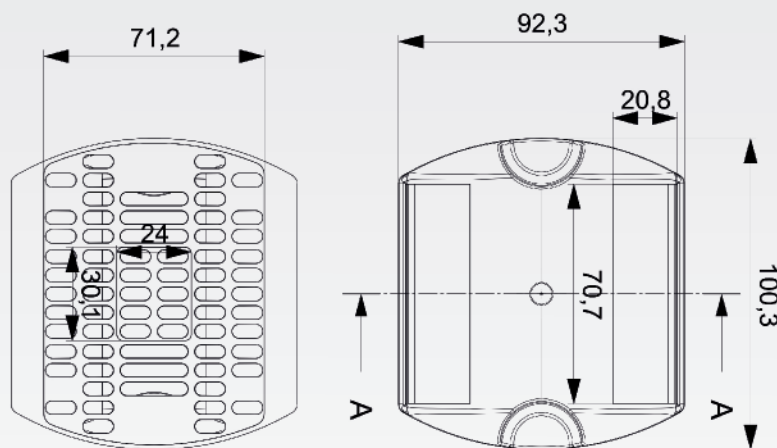
*"Lighting the Way, Mile After Mile"*



## ADVANTAGES :

- Manufactured from impact-resistant polymers for durability.
- Resist scratching and maintain retro-reflectivity.
- Fingers grips to make installation easier.
- Equipped with Microprismatic reflective lenses on each side ensure higher Reflectivity.

## MEASUREMENTS:



## FEATURES:

- Durable, Wet and dry retro reflectivity.
- High Abrasion resistance.
- Long-lasting molded-in body colours.
- Easy to apply with finger grips .
- Compatible with alcolite epoxy adhesives.
- Enhances night visibility.
- Can be used as lane dividers.
- Installed on traffic circles & roundabouts.

**Application Areas - Highways & city roads, Medians & curves, Tunnels & low-visibility zones**

